

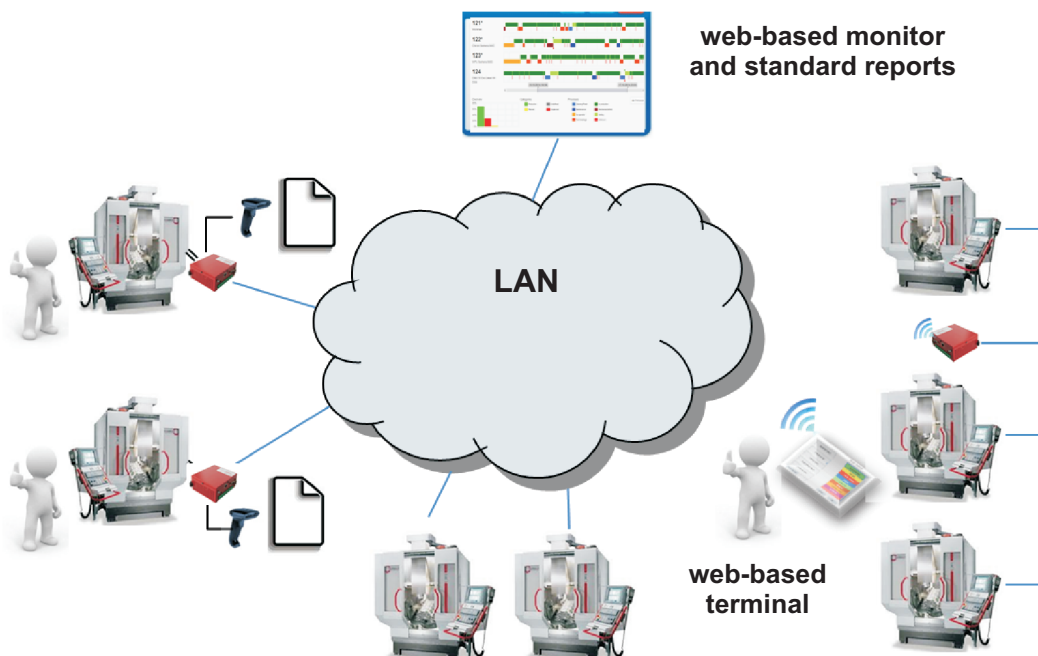
MDC 4000

(Manufacturing Data Collection)

MDC 4000 is an easy to operate and easy to use network based system. It visualizes the actual status of all machines on a shop floor and gathers all information coming from the machine and entered via barcode scanner or terminal. It is the ideal management support tool for the manufactory.

Customer`s benefit

- The current status of all machines is visible anytime in real-time
- Optimization of efficiency of resources: Shortening downtime and production time per piece.
- Any kind of report for the management
- Motivation of the employees by showing them their productivity increase



Data collection

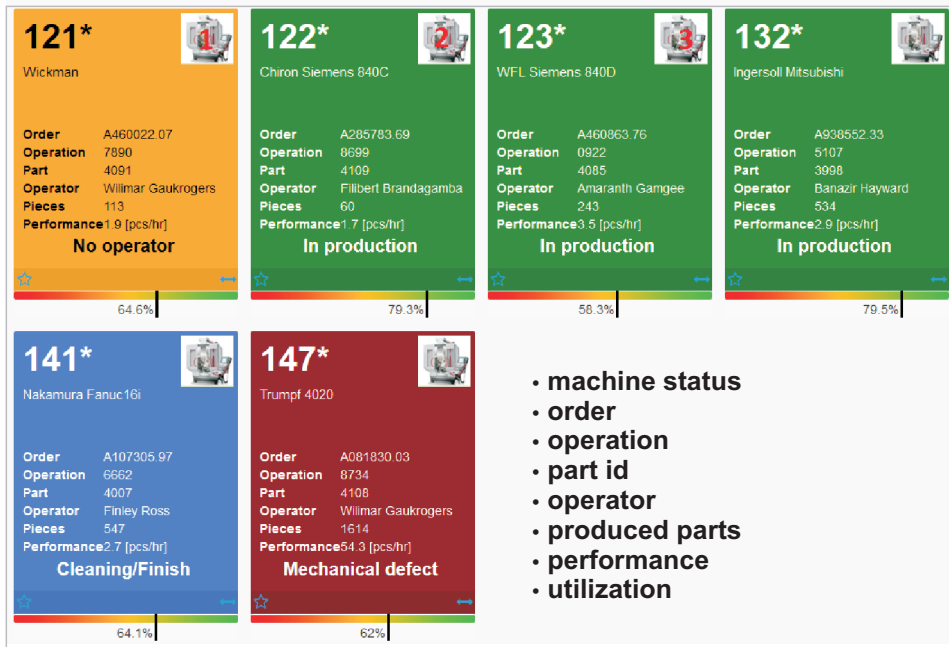
Status changes of the machine are captured automatically by the device server Netcube Web-IO. The same device counts the produced parts. Reasons for downtime as well as order number, operation, product code and the operator`s identity can be registered and assigned by various input devices directly at the machine: Bar-code scanner, **web-based terminal** web-based terminal on a panel PC or a mobile device.

The **Netcube Web-IO** is a unique device which can be used simultaneously for MDC and DNC. The device has 8 digital inputs and 8 digital outputs, 2 x RS-232 and network connectivity (LAN/Wifi).



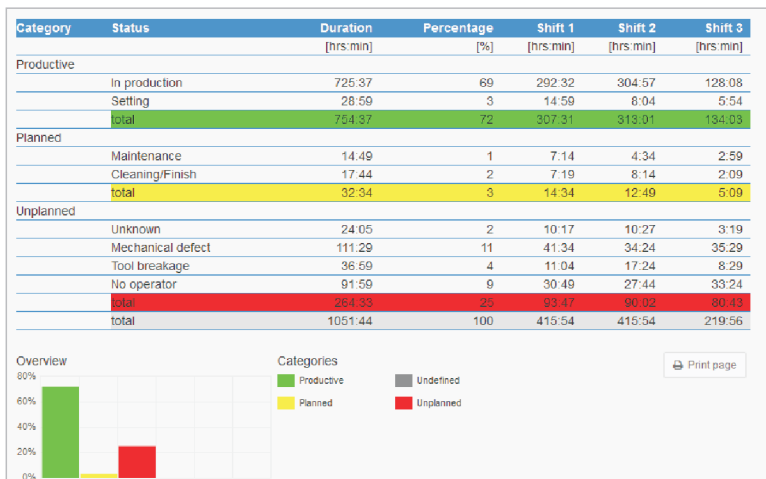
MDC - Monitor

The **MDC Monitor is a online web-portal** and therefore device independent. The standard reports can be spontaneously made on the portal.



Reports

All production data are in a Microsoft SQL database. This data warehouse can be accessed by any kind of business intelligence tool. Quinx uses SSRS (SQL Server Reporting Services) as standard tool. Reports can be made available on a web front-end e.g. on the Intranet. Of course a login is required.



MDC configuration

The MDC softclient can be used for various things depending on the user rights:

- Editing collected data
- Configuration of the MDC 4000
- Editing shift plans
- Data export